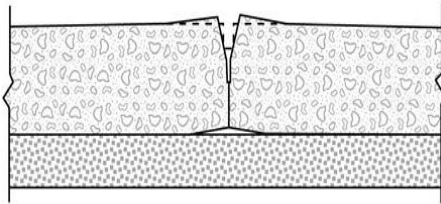


Case Study - Product: RR501 | 5lb Stabilizing Foam

Project: Loading Dock Joint Stabilization



Challenge:

Various sections of concrete were poured at a nearby warehouse a few years ago. Due to slab curl, the sections had begun to move up and down when extreme pressure was applied to the loading dock and aisles throughout the warehouse.



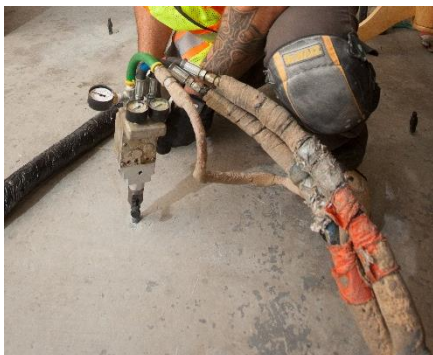
Solution:

Joint Stabilization Needed Expert Care

The warehouse owners wanted to correct the problem so as not to cause more damage to the sections through stabilizing the joints and filling all voids below the slabs.

The voids beneath the warehouse loading dock had to be remedied and the joints needed to be stabilized.

This problem was fixed by using HMI RR501 5 lb. high density polyurethane, injected in a liquid state to expand and fill voids in sizes up to 1/32".



Polyurethane was injected into the aisle joints to keep them from shifting, when the tow motors drove over them and filled all voids beneath the loading dock.

All joints were then caulked to guarantee the proper seal.